

3/30/20

Dear Winchester residents and stitchers,

As most of you know there is an extreme shortage of masks for our first responders. Many communities are contacting their seamstresses or stitchers to make masks. While these masks are not ideal in the prevention and protection from COVID-19, they do offer a level of protection during the pandemic.

I ask that anyone who has extra time to consider making these masks. Directions are attached. These directions are copied from Monadnock Community Hospital website. Masks can be dropped off either at the town hall or the PD in a bin outside the door. Your help is greatly appreciated!

Thank you

Masks

Here's more detailed instructions for making the masks.

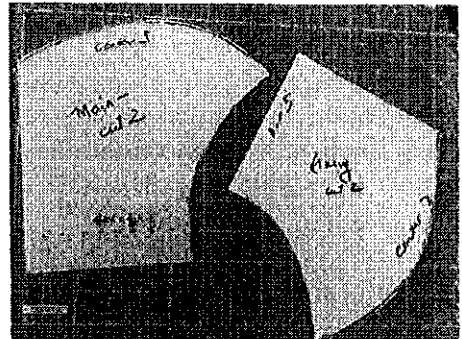
Keep in mind that the goal is to make a sturdy mask that can be washed and bleached repeatedly. No raw edges, no loose threads.

Main fabric – at least 9" x 17", tightly woven cotton

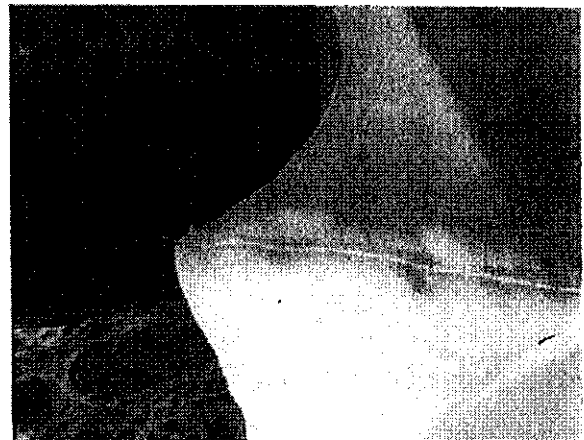
Lining fabric – at least 9" x 14", tightly woven cotton (I use good quality muslin for my linings)

Ties – 2 strips, 1 ½ wide x about 32" long. You could probably use ready-made bias tape instead.

1. Trace the pattern on template plastic or cardboard.
2. Cut out pattern shapes with fabric folded in half. Cut two main pieces, two lining pieces.



3. Put main fabric pieces right sides together, and sew the curved center seam. Press seam to one side, clipping curve if needed. Topstitch.
4. Repeat with lining pieces. They'll look like weird little bra cups at this point!

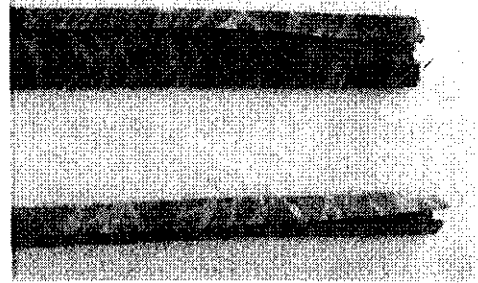


5. Place main fabric and lining fabric units right sides together. Sew the top and bottom edges. Yes, the lining is shorter than the main piece.
6. Clip seams if needed. Turn right side out and press. Topstitch top and bottom edges.

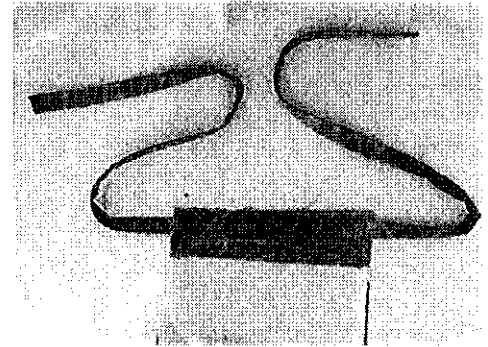


7. To make ties, fold and press the long edges about 1/4" toward the center, then fold and press the strip in half.

Stitch along the length, turning in about 1/4" at both ends so there's no raw edges.

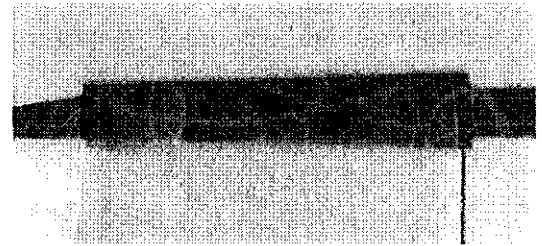


8. With mask lining side up, center the tie on the ear edge, so that half the tie extends at the top and half at the bottom.

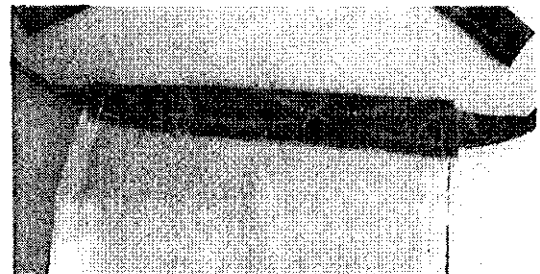


9. Fold that extra main fabric over once and again, so you are sort of rolling the tie into the folds.

You should have a nice neat folded edge covering the raw edge of the lining.

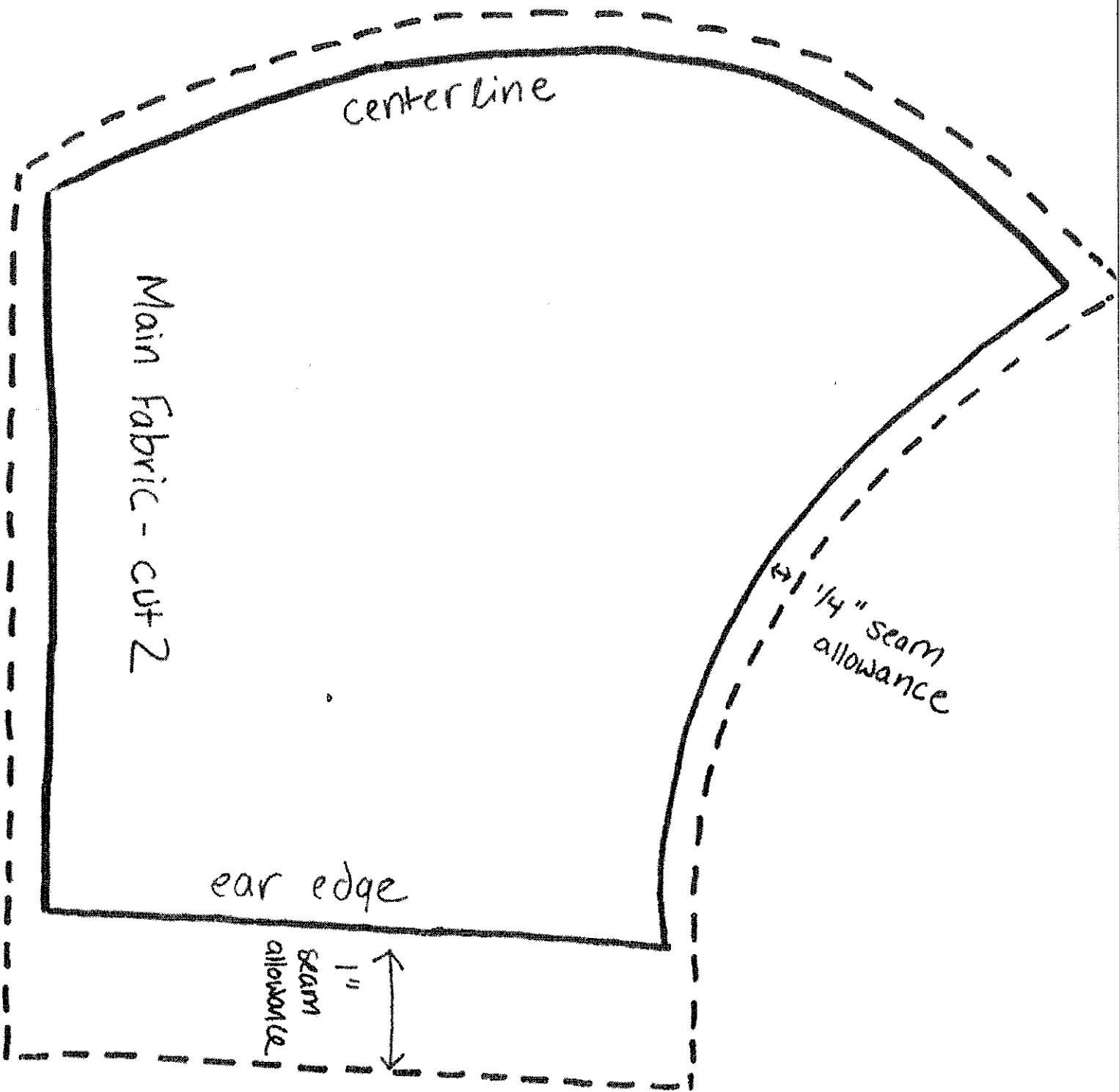


10. Stitch along both edges of the folded part, making sure to catch the tie as you stitch.



11. Done!





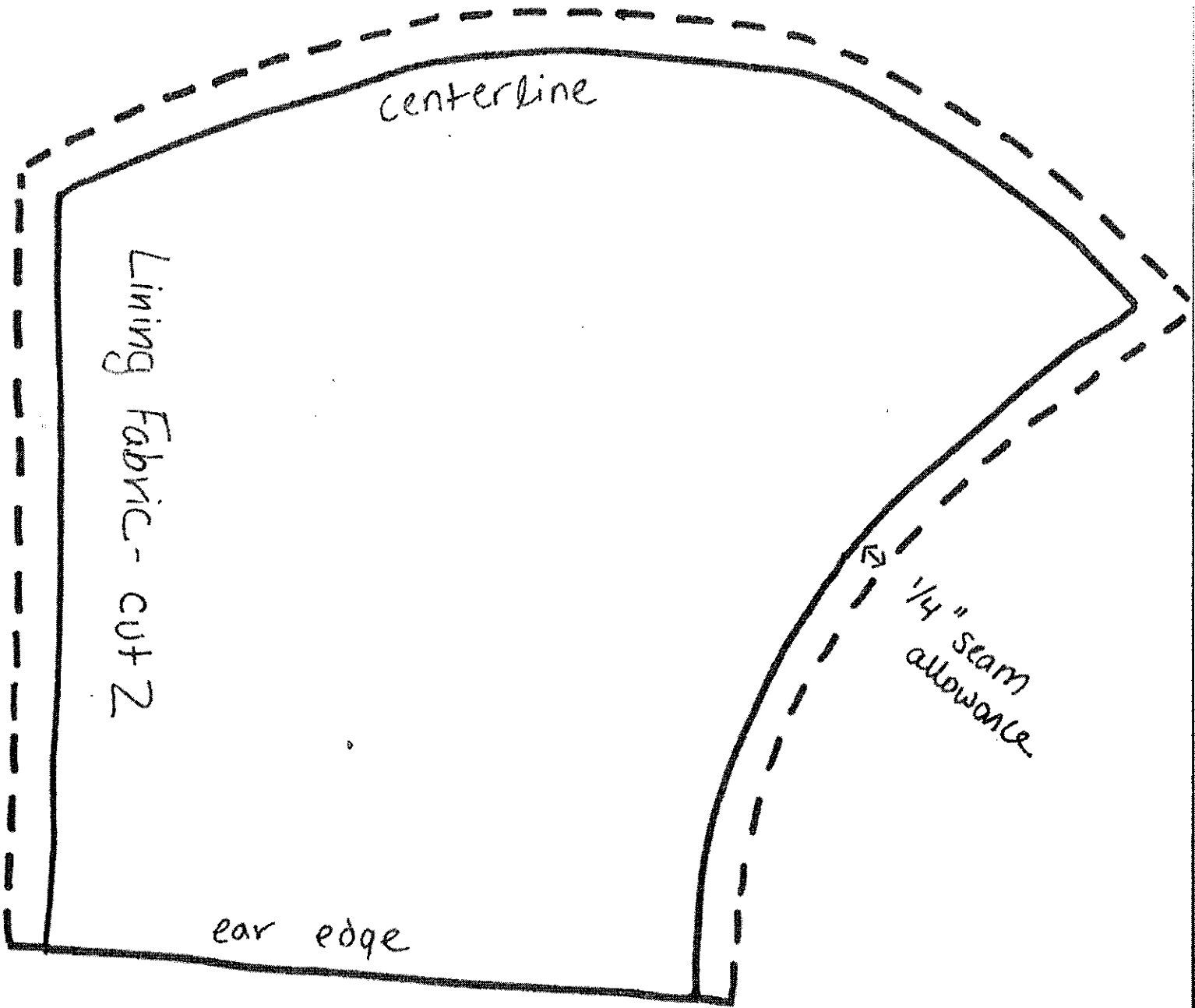
center line

Main Fabric - cut 2

ear edge

1"
seam
allowance

1/4" seam
allowance

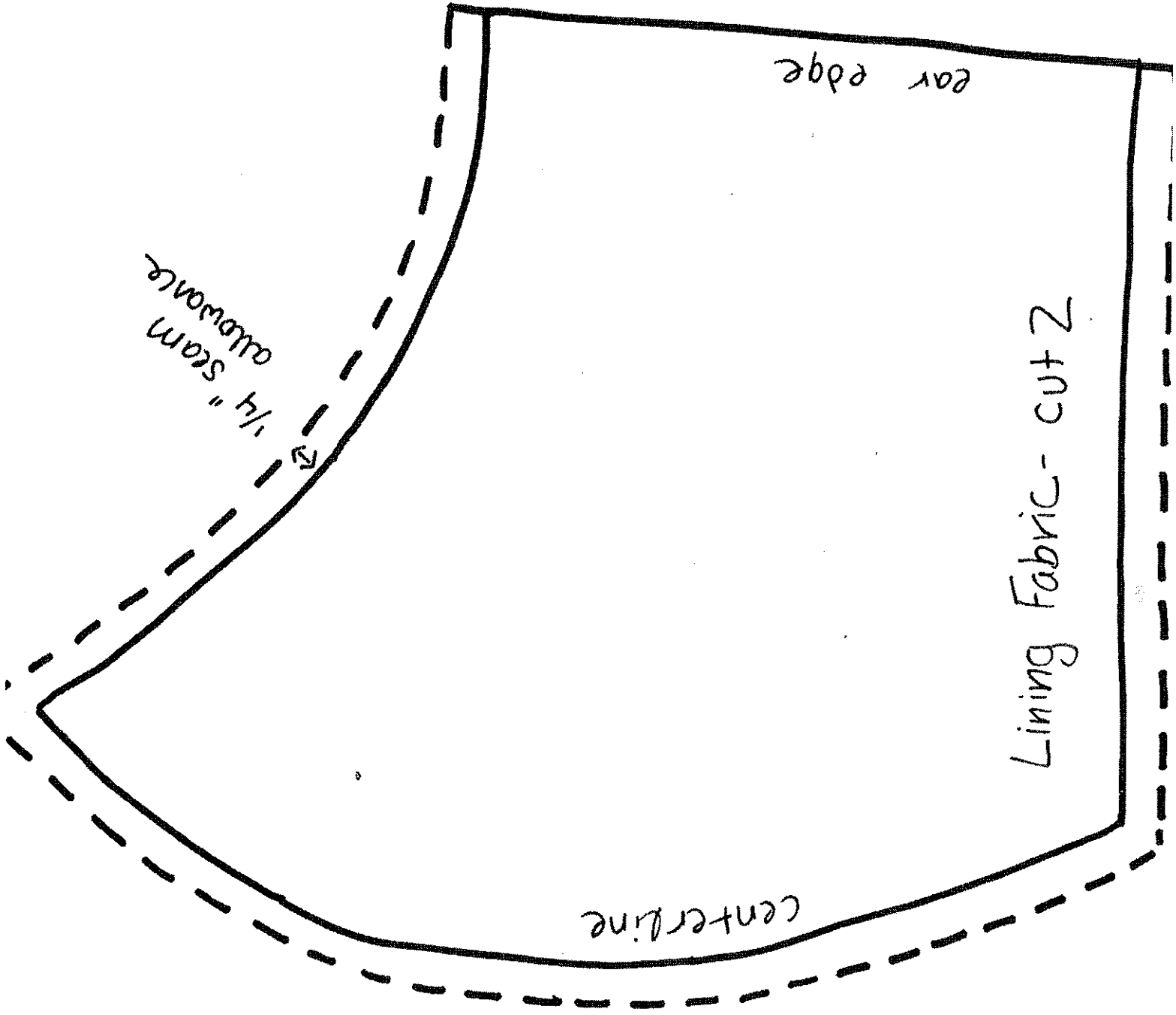


centerline

Lining Fabric - cut 2

ear edge

1/4" seam allowance

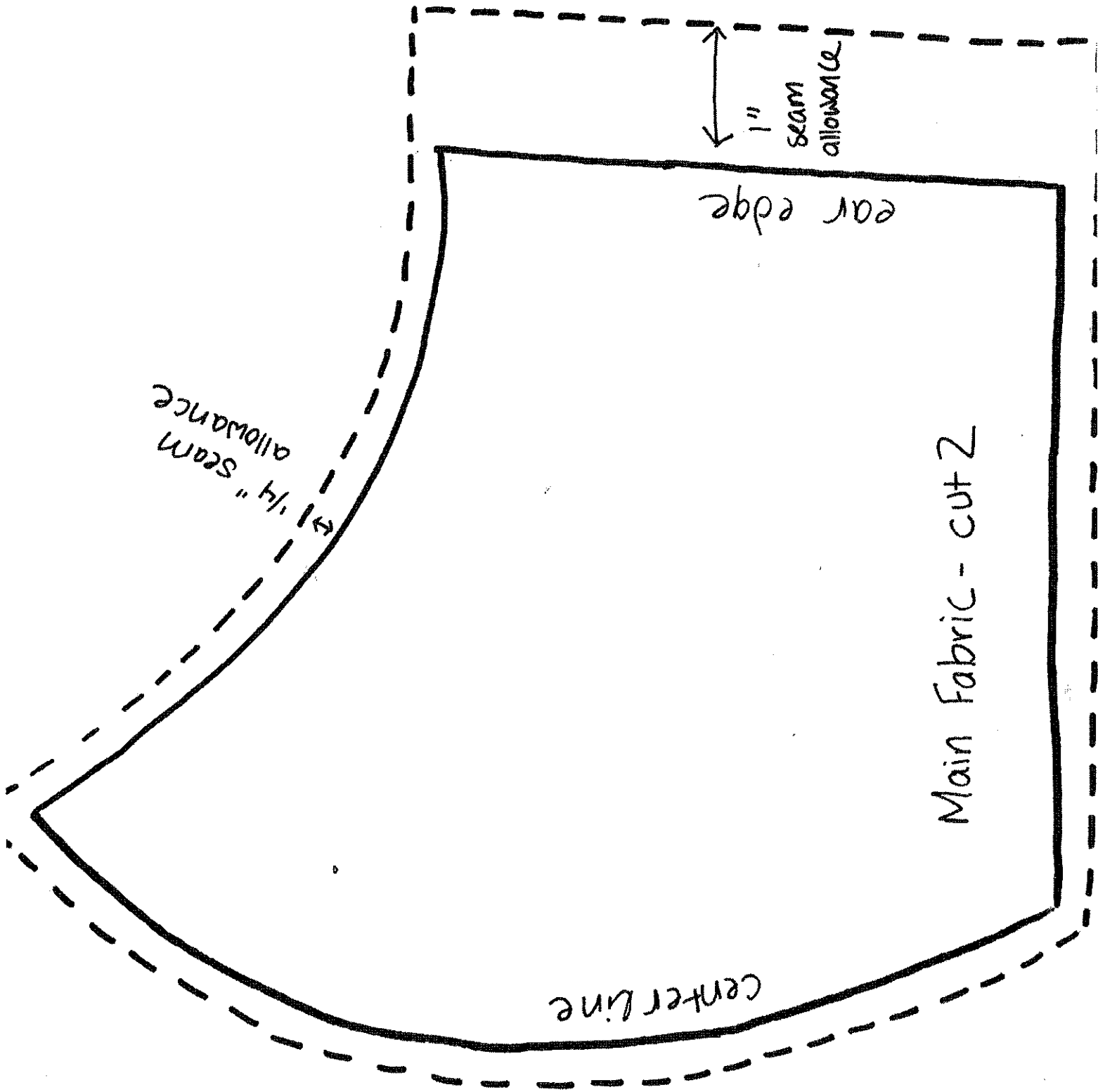


ear edge

1/4" seam allowance

centerline

Lining Fabric - cut 2



1" SEAM allowance

ear edge

1/4" SEAM allowance

Main Fabric - cut 2

centerline